

# LABORATORIES AND WORKSHOPS



Member of  NIEDAX GROUP

**A UNIQUE PARTNER PROVIDING EXPERTISE  
IN THE MOST CHALLENGING INDUSTRIAL PROJECTS**



# About Spina Group

Spina Group is an Italian company that has been operating for more than 30 years in the design, production and procurement of **instrumentation & electrical bulk materials for industrial plants.**

Starting in 1990 as a distributor of electrical materials, over the years Spina has evolved into an international group dedicated to delivering tailor-made solutions across various sectors:



**OIL & GAS**



**INDUSTRIAL**



**ENERGY**



**PETROCHEMICAL**

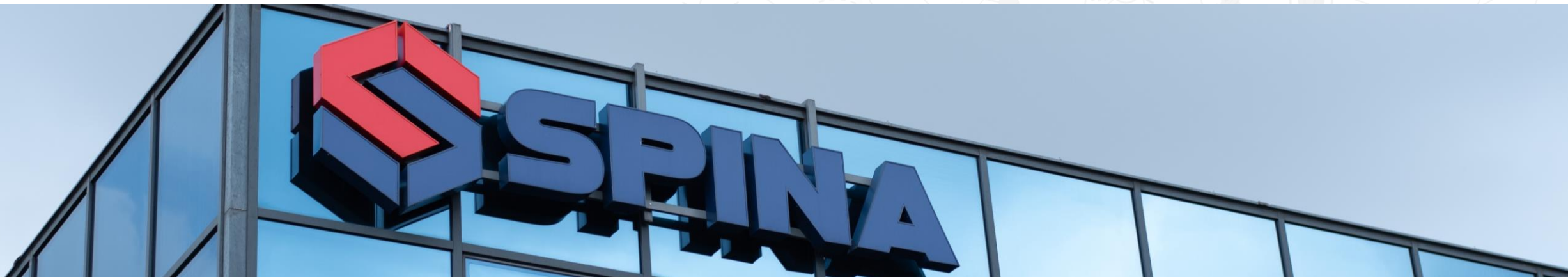


**INFRASTRUCTURE**



**NAVAL**

Each sector is approached with a specialized focus, ensuring that our solutions address the unique demands of each industry.



# BUSINESS UNITS



## PRODUCTION

CABLE TRAYS  
CABLES  
EXPLOSION PROOF  
VALVES, MANIFOLDS,  
COMPRESSION FITTINGS



## E&I PACKAGES

LIGHTING  
POLES  
GROUNDING  
ELECTRICAL PANELS  
CONDUITS



## LABORATORIES & WORKSHOPS

MAINTENANCE &  
REPAIR WORKSHOPS  
CHEMICAL LABORATORIES  
MANUAL SAMPLERS  
HANDLING AND LIFTING  
EQUIPMENT



## SPARES & CONSUMABLES

OIL & LUBRICANTS  
SPARE PARTS  
SAFETY  
TOOLS



# Engineering Services



**DESIGN & SUPPLY  
OF UTILITY  
DISTRIBUTION  
NETWORK**



Offices, locker rooms,  
canteen, training rooms  
fully equipped and ready  
to be used by site  
personnel

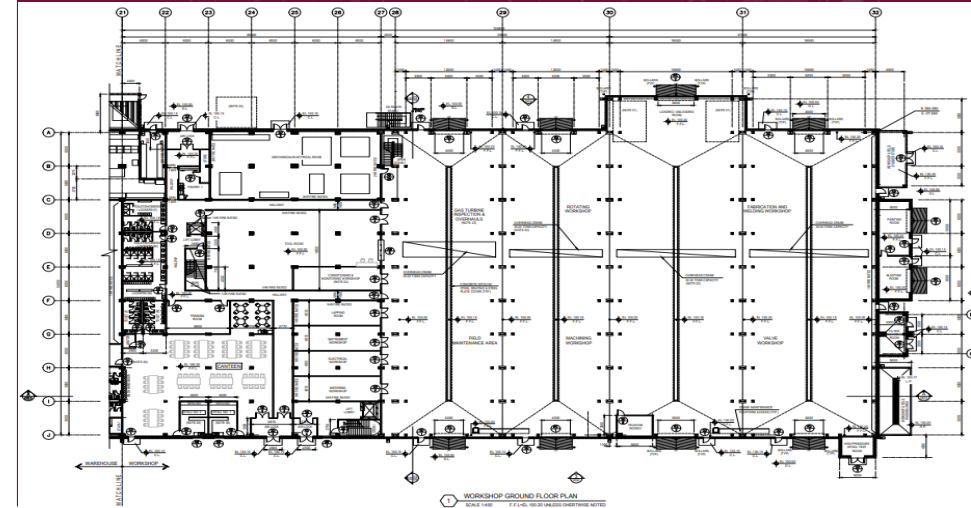
**DESIGN & SUPPLY  
OF ANCILLARY AREAS**



Available surfaces  
Type and number of  
machines and  
equipment foreseen by  
the project

**SPACE OPTIMIZATION  
BASED ON**

With our engineering department and the worldwide network of our consultant, we are in the position to **SUPPORT OUR CUSTOMERS** with the following services.

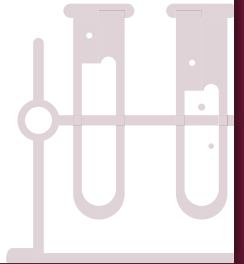




# LABORATORIES & WORKSHOPS

## LABORATORIES

Instrumentation & Analyzers  
Technical Furniture  
Fume Cupboards & Air Treatment Systems  
Utilities & Technical Gases Distribution Systems  
Hardware & Software Upgrade of Existing Laboratories  
Chemicals & Reagents



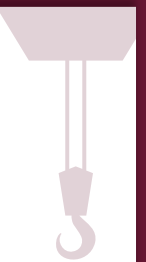
## MECHANICAL AND INSTRUMENTATION WORKSHOPS

Metalworking Machines  
Physical and Mechanical Testing Machines  
Electrical & Pneumatic Tools  
Welding Bays  
Measurement and Calibration Benches  
Industrial Furniture & Shelving Systems  
Lifting and Moving Systems



## HANDLING AND LIFTING EQUIPMENT

We provide the freedom to choose any brand worldwide and a wide network of partners for customized and certified solutions, designed to withstand extreme conditions, including marine environments and ATEX zones up to ZONE 1.



## MANUAL SAMPLERS

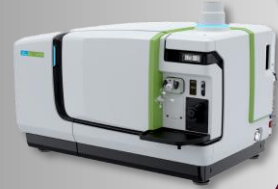
Samplers for Liquids  
Samplers for Gases  
Samplers for Multi-Phase Fluids





**MAJOR ANALYZER**

**MASS SPECTROMETRY  
(GC-MS, LC-MS)**



**GAS CHROMATOGRAPHY (GC) AND  
LIQUID CHROMATOGRAPHY (HPLC)**



**MOLECULAR SPECTROSCOPY  
(UV-VIS-NIR, FTIR)**



**ATOMIC SPECTROSCOPY, ATOMIC  
EMISSION (ICP-MS E OES), ATOMIC  
ABSORPTION (AA), FLUORESCENCE  
AND X-RAY DIFFRACTION**



**TOC AND ELEMENTAL ANALYSIS**





## MAJOR ANALYZER

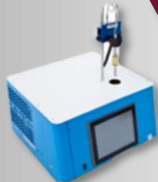
PENSKY MARTENS (ASTM D93 A/B/C,  
ASTM D3941, ASTM E502)



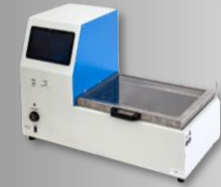
CLOUD POINT (ASTM D2500, D5771,  
D5772, D5773)



CFPP (ASTM D6371)

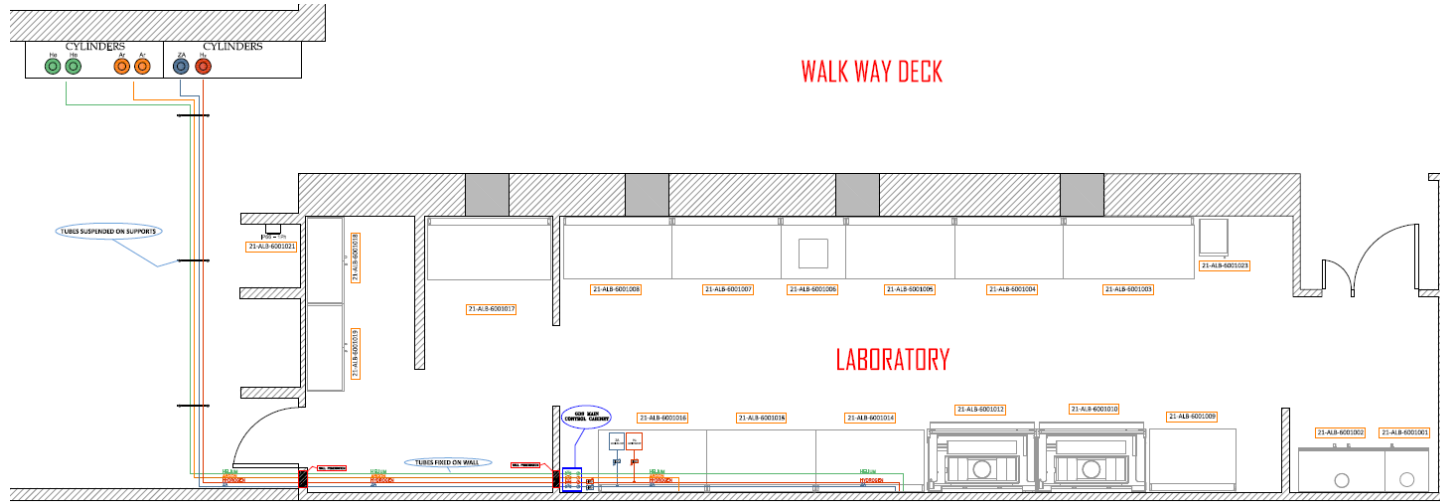


REID VAPOUR PRESSURE  
(ASTM D323)



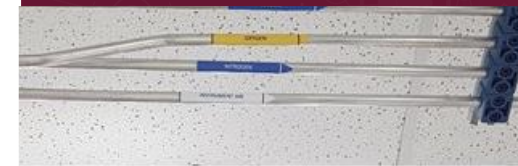
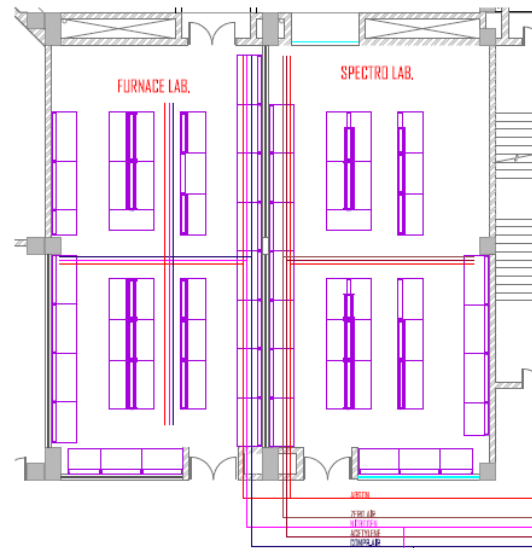
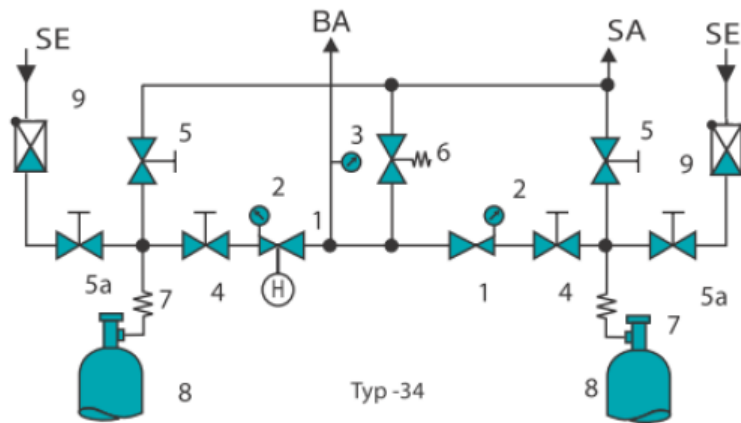
SAYBOLT VISCOMETER  
(ASTM D88, D7496, E102)





## GAS DISTRIBUTION SYSTEM

- Routing design & calculation based on available spaces and forecast number of machines
- Consumption calculation
- Supply of all the components including cylinder racks, change-overs.
- Installation including tubing welded through orbital welding machines





Extraction Arms



Fume Hoods

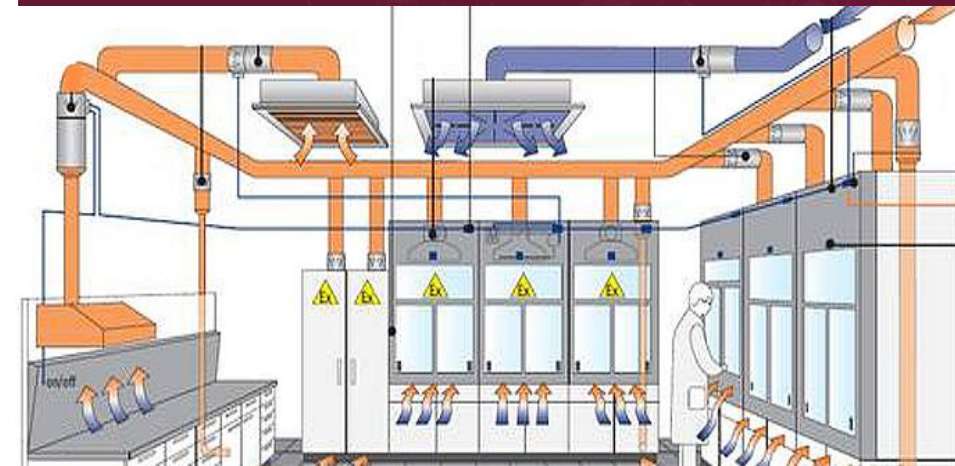


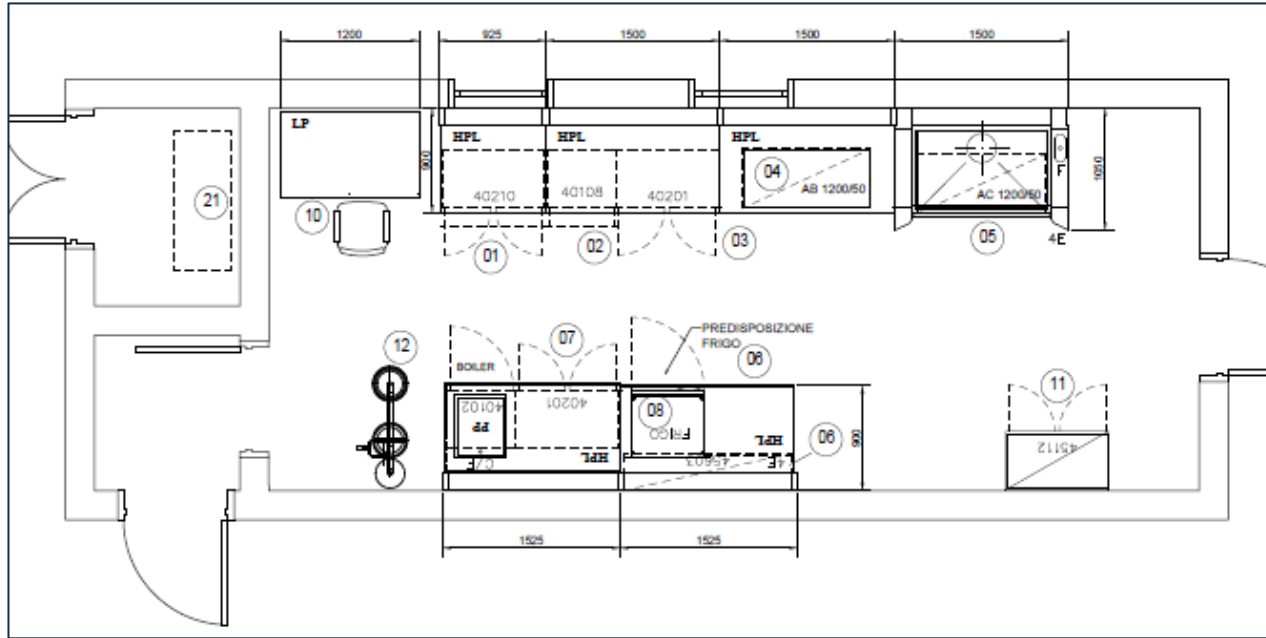
## FUME & AIR TREATMENT SYSTEM

The ducted fume hoods as they are the most used fume hoods available on the market today. The available types are the constant air volume (CAV), the reduced air volume (RAV) and the variable air volume (VAV) chemical fume hoods.

Chemical fume hoods work by extracting air and noxious fumes away from the lab. and out of the fume hood where the air is filtered and returned to the outside environment by means of a duct system.

User protection is enhanced by a movable sash that can be raised or lowered based on the needs of the user. All three types work in a very similar way, differentiated only by their air flow properties.

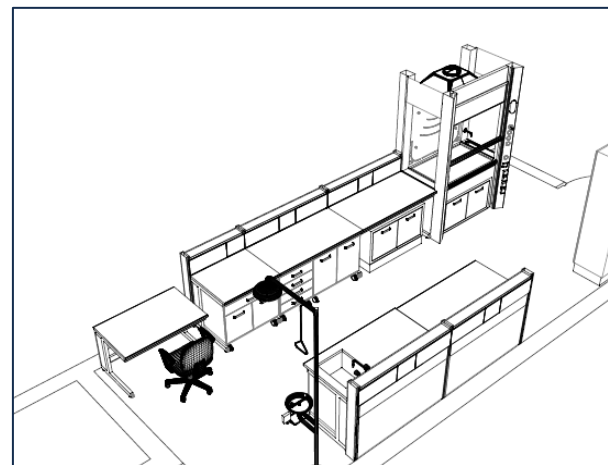


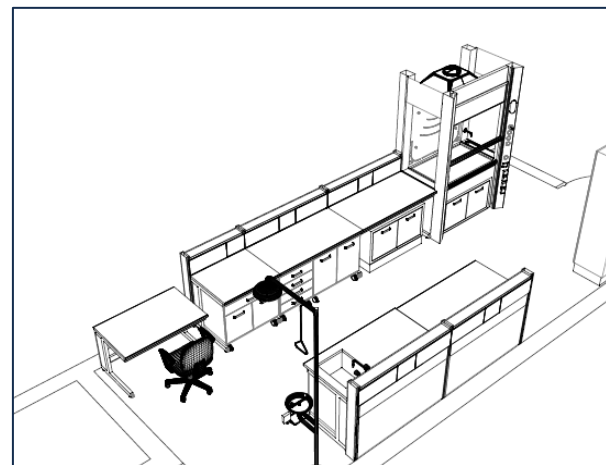
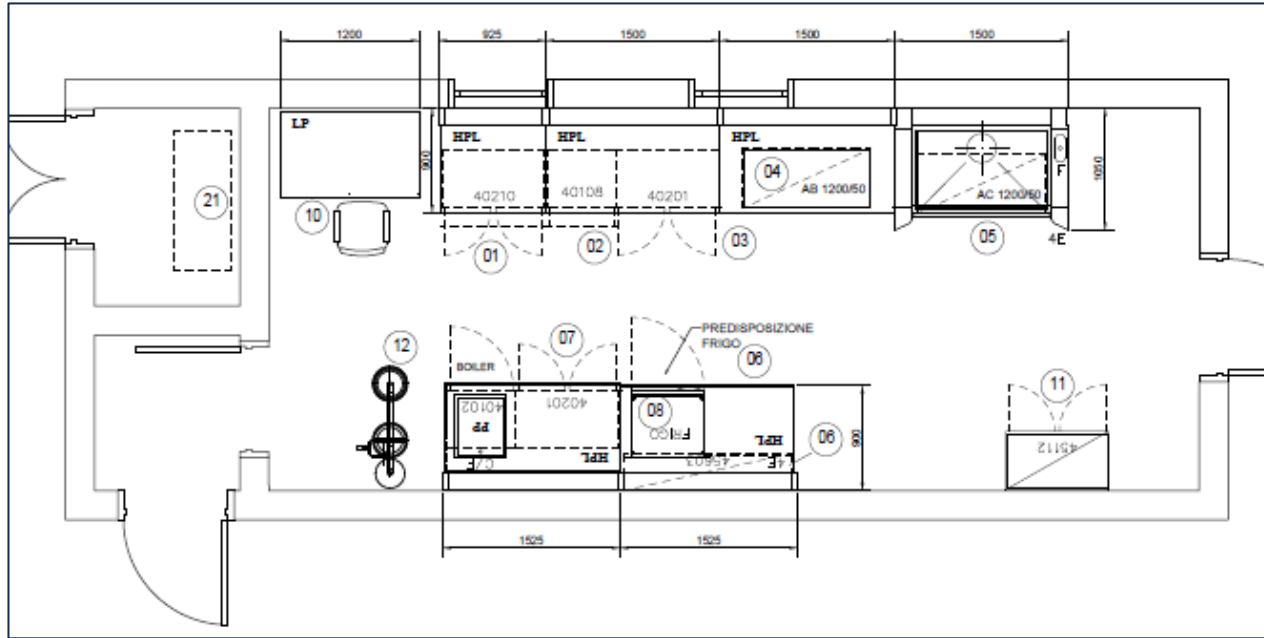


## FURNITURE

Availability of an almost infinite series of combinations of structure & working surface materials, module dimensions & internal configuration, tops & shelves that allow laboratory's operators to work safely and with everything at their fingertips.

All our solutions are entirely designed by our team of specialists which is also able to follow all the assembling activities at site.



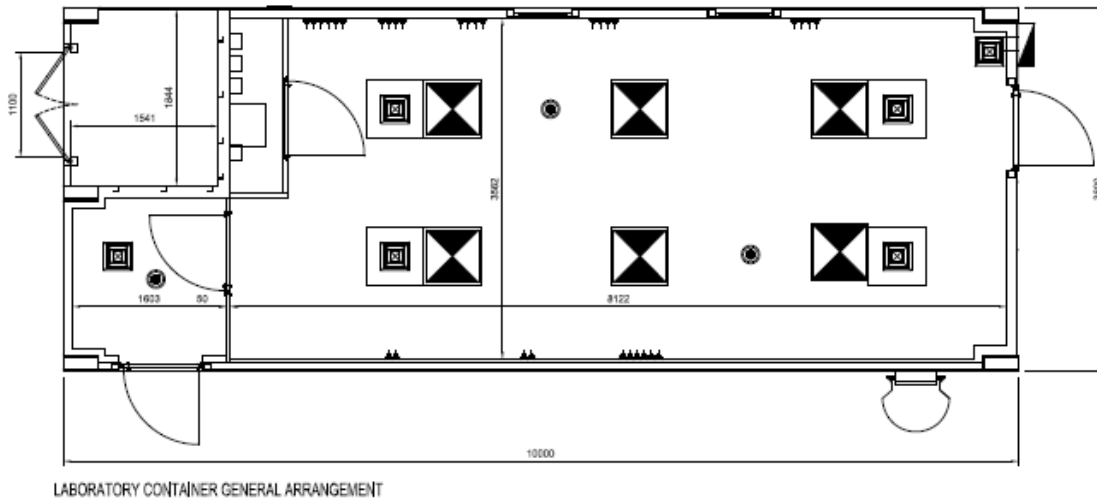
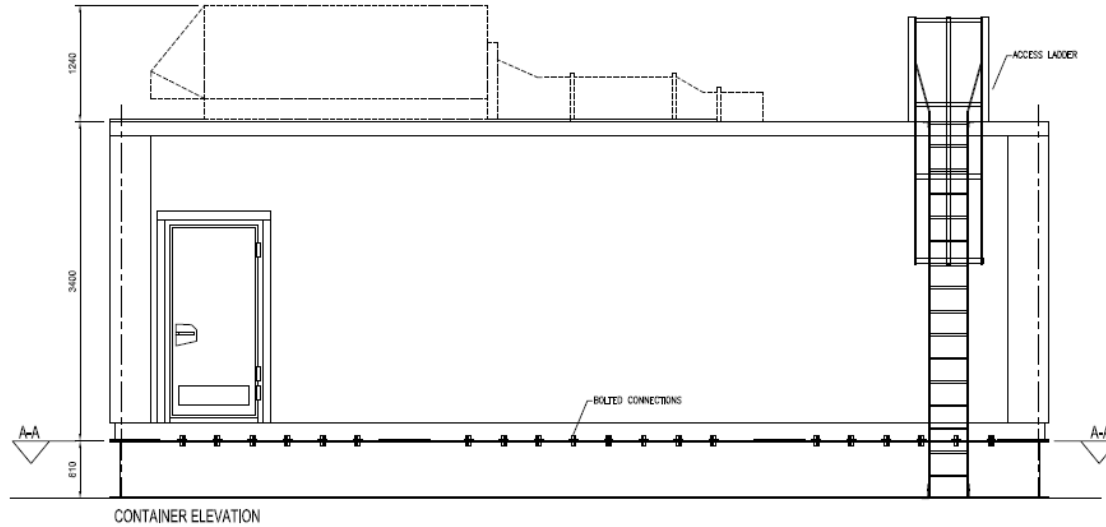


## TECHNICAL FURNITURE

- Modular furniture
- Safety cabinets
- Office Furniture







## CONTAINERS & CUSTOM-MADE SHELTERS

Thanks to our engineering skills and to the manufacturing capability of our partners worldwide, we are able to supply tailored laboratory shelters either based on commercial container sizes (e.g. 20ft / 40ft) or specifically designed with tailored dimensions in order to suit any particular application need in term of construction materials, design and certifications required for installation in the most severe conditions, like those on vessels or offshore platforms.



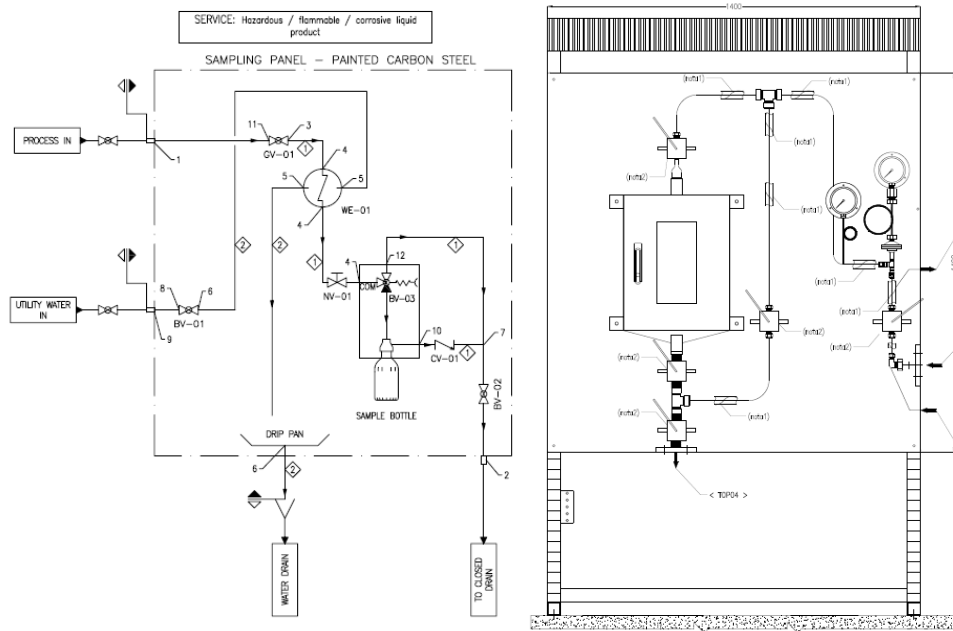


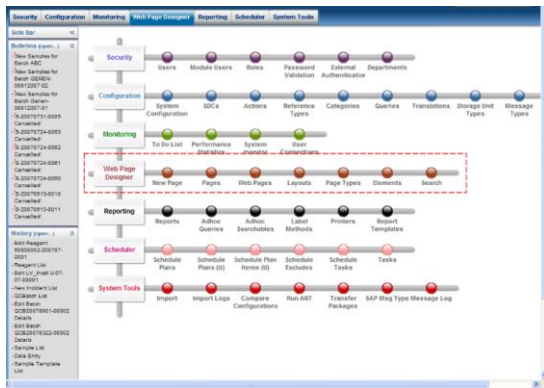
## MANUAL SAMPLERS

All our systems can be supplied on a self-supporting rack or suitable for installation on existing poles and are mounted on Painted CS or SS plates where there are installed and tested all the components.

Our standard material for components in contact with the fluid is the AISI 316/316L while special materials (e.g. Inconel 625 or Hastelloy C276) are used for those processes with critical pressure and temperature conditions or having contaminants that would physically or chemically affect the SS.

Stream heaters, Purge Systems and filters, Canopies, Cooled / heated / pressurized cabinets can be provided in order to allow the quickest and the safest sampling in any climatic condition

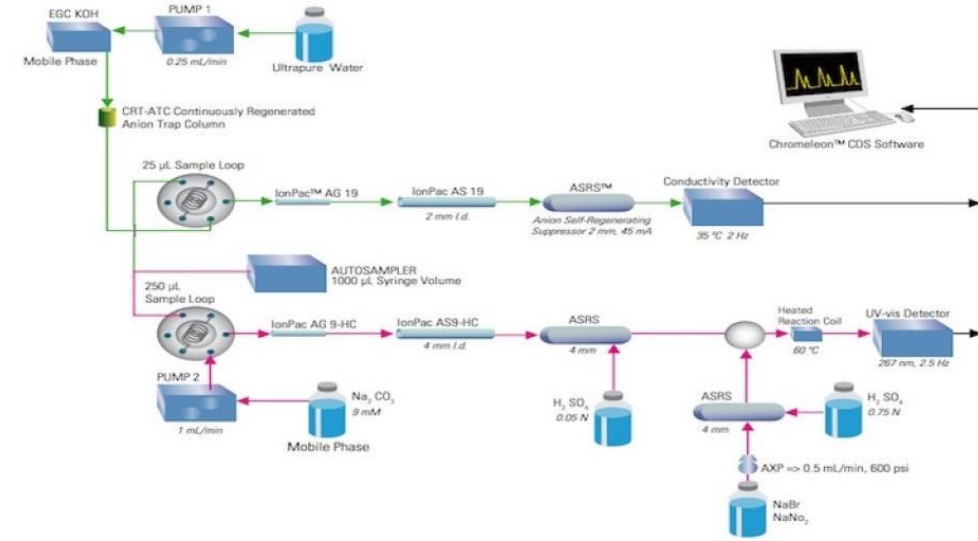




## LABORATORY INFORMATION MANAGEMENT SYSTEM

LIMS Turn-key solutions from major worldwide providers

- Definition of hardware and installation material
- Definition of system architecture and necessary site activities





# Mobile Workshops

This kind of application based on customization of commercial containers with length 3m, 6m, 12m are the ideal solution in case of need of **temporary or mobile workshops**, where activities of **test, maintenance and repair** must be done on site in various places. Container can be equipped with generators in order to be independent and feed the machine they contain, or they can be equipped with plug-in panels suitable for connection to the local utility network.

Any container can be customized with shelving, test benches, portable tools and all the necessary equipment based on the specific activity to be performed.

## CONTAINERS & TRAILERS SOLUTIONS





# Mechanical Workshops

## REPAIR, CALIBRATION & TEST

PORTABLE & STATIONARY  
TESTING & CALIBRATION TOOLS  
FOR ELECTRICAL AND  
PNEUMATIC EQUIPMENT



MACHINES FOR LAPPING,  
BEVELING, MILLING, BENDING



TEST & CALIBRATION  
BENCHES FOR VALVES



## MACHINERY & TOOLS

BENCH & PORTABLE TOOLS



WORKSHOP FABRICATION  
& WELDING MACHINES







# Mechanical Workshops

## AUXILIARY EQUIPMENT

AIR COMPRESSORS &  
ELECTRICITY GENERATORS



MOBILE LIGHTING TOWERS  
WITH LED TECHNOLOGY



ATEX WELDING  
HABITAT SYSTEMS



WORK BENCHES AND SHELVING



ATEX HVAC TRAILER-MOUNTED



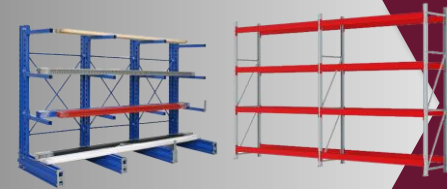


## STORAGE & SHELVING

AUTOMATIC VERTICAL WAREHOUSE



CANTILEVER RACK  
PALLET RACKING



WORK BENCHES  
AND CABINETS





# Mechanical Workshops

## PLANT WASTE MANAGEMENT

SPECIAL TRAILERS FOR SLUDGE



TRACTORS, LOADERS  
AND SERVICE VEHICLES



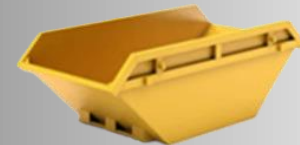
GLASS CRUSHERS



VERTICAL  
AND HORIZONTAL BALERS



SKIPS TAILORED IN COLORS  
AND DIMENSIONS





## HEAT EXCHANGER – TUBE BUNDLE MAINTENANCE

BUNDLE EXTRACTION  
AND LIFTING



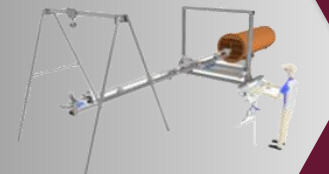
TUBE –  
TUBESHEET ORBITAL WELDING



BUNDLE CLEANING



TUBE INSERTION  
AND PULLING SYSTEMS





Lifting & handling equipment are fundamental devices at any stage of every kind of plant.

Our added value are the freedom to select any brand at any location in the world, and the wide network of business partners **who can customize or design from zero**, special solutions tailored in terms of material, dimensions, construction necessary to withstand with moist severe conditions, either of usage or of environment up to the marine one, for which we can provide solutions tailored in terms of structural calculation/construction, painting and ATEX area classification up to ZONE 1, supplied along with mandatory certificates issued by the third party naval entity in charge for each project.





# Mechanical Workshops

HANDLING AND LIFTING EQUIPMENT

MANUAL AND ELECTRICAL JIB CRANE



MANUAL AND ELECTRICAL CHAIN HOIST  
FROM 0,5TON UP TO ABOVE 10TON



MULTIFUNCTIONAL LIFTING TONGS  
AND CLAMPS



MANUAL AND MOTORIZED GANTRY  
CRANES



ELECTRIC PALLET TRUCK



ELECTRICAL DRIVE CRANE WITH  
VARIABLE WHEELBASE





# Mechanical Workshops

HANDLING AND LIFTING EQUIPMENT

STACKABLE METAL CONTAINER FOR CONSTRUCTION SITE MATERIALS AND EQUIPMENT, AVAILABLE WITH STANDARD DIMENSION, MATERIAL, OR CUSTOMIZABLE IN TERMS OF DOORS, COVERS, SHEET THICKNESS...



HEAVY DUTY SELF PROPELLED TROLLEYS, MOVERS AND SKATES



ELECTRIC POWERED COUNTERBALANCE FORKLIFT TRUCKS



DIESEL POWERED COUNTERBALANCE FORKLIFT TRUCKS



TERMINAL TRACTORS & SHUNT TRUCKS



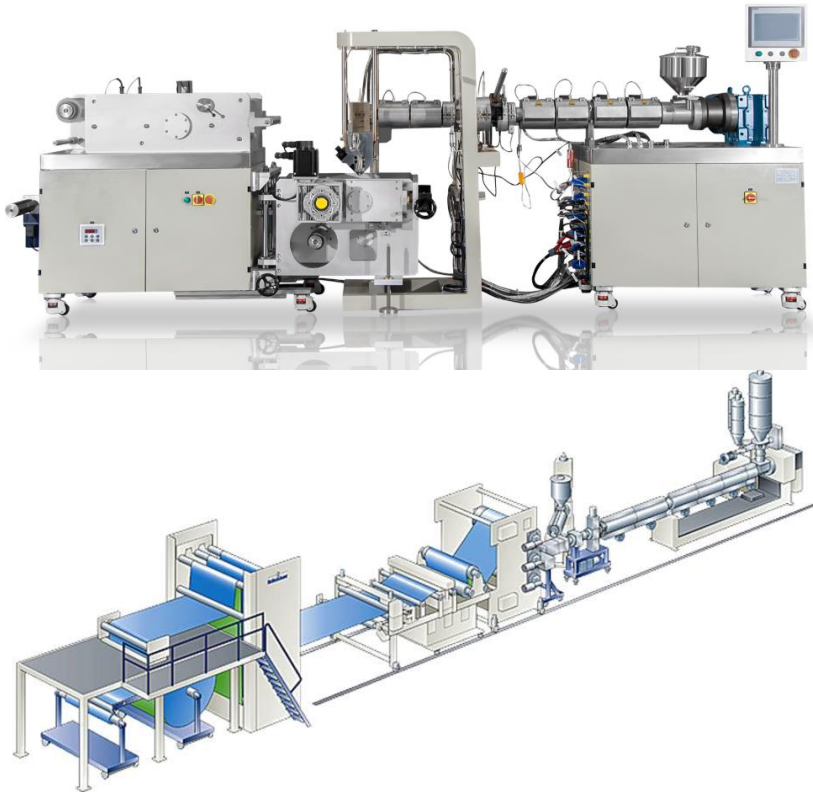
SINGLE GIRDER & DOUBLE GIRDER OVERHEAD CRANE







**CAST FILM EXTRUSION LINE**



**PELLETIZER**



**MIXING CHAMBER**



# Project Engineering and Documentation

Thanks to our highly specialized staff, we can manage internally all post-order activities related to documentation and QA/QC (\*) like but not limited to:



- Bill of material
- Tag wise datasheet dossier
- Inspection & test plan
- 2D and 3D engineering drawings and utilities schemes
- Certificates and declarations of conformity
- Spare part definition and related SPIR form
- Installation, operation and maintenance manual
- Quality control plan and manuals
- Erection and installation procedure
- Vendor data book
- Preservation instruction for storage at site
- Packing & transportation documents and procedure
- Factory acceptance testing (FAT) procedure
- Site acceptance testing (SAT) procedure
- Training program and manuals

*(\*) others, including those attested by third party authorities can be provided upon request*



# PROJECT SPECIALISTS

**PROJECT MANAGER:** Ready to lead & realize complex and detailed Engineering and Integrated services.

**PROJECT ENGINEER:** Proven engineering expertise, expert process know-how of laboratory requirements like test methods, standards, regulations, application setup & support etc., on site supervision and coordination of end-user personnel.

**SITE ENGINEER:** Able to carry out on-site supervision of the project during the phases of commissioning and start-up of the supply even in coordination with OEM specialists for critical items, as well as provide for the theoretical and practical training of local operators on supplied instruments, machinery and tools.

As Spina Group we can handle directly through our personnel all the main activities related to a Laboratory Project for which we are able to deliver a tailored solution covering also following fundamental points:



START-UP &  
COMMISSIONING



TRAINING



SPARE-PARTS &  
CONSUMABLES



FUTURE SOFTWARE &  
HARDWARE UPGRADES

# Appreciation Letters



AEGEAN REFINERY PROJECT (ARP)  
TSGI MÜHENDİSLİK İNŞAAT LTD.ŞTİ.  
AYAZAĞA Mh. MEYDAN Sk. No.1 BEYBİ GİZ  
PLAZA K.26/27 No.2615 34396 MASLAK-  
İSTANBUL TURKEY

To the kind attention of  
**SPINA GROUP S.r.l.**  
Via del Tecchione 36/B  
20098-San Giuliano Milanese (MI)  
ITALY

16 July 2018

**Subject: AEGEAN REFINERY PROJECT (ARP)**

Dear Sirs,

We acknowledge the successful completion of the Chemical Workshop with our full satisfaction.

We have chosen Spina Group because it guaranteed us to have a single source for the supply of the wide range of products that the project required.

Spina Group provided us a team of technicians and engineers with international skills who have been able to develop, according to the requests, the project of the laboratory layout.

Furthermore, your team has showed a strong organizational and problem solving skills, encouraging collaboration among people involved and finding the best solutions to match our requests.

For all the above reasons, we trust we may join again our interest in the future.

Best regards,

Alberto RAZZINI  
Lead Building Services Engineer  
TSGI Mühendislik İnşaat Limited Şirketi  
Aegean Refinery Project (ARP)  
STAR Rafinerisi



**Initec Plantas Industriales, S.A.U.**  
Maria de Portugal,9  
28050 Madrid España  
Tel. (34) 91 587 10 00

To: SPINA GROUP SRL

Subject: Work Completion Letter

Project: KNPC MAA REFINERY GT5 - Laboratory Equipment

We Tecnicas Reunidas like to congratulate your team for the successful completion of the above mentioned project. The professionalism and proactive cooperation demonstrated by your team is commendable and deserve appreciation. We wish that our cooperation will go a long way creating other possibilities of success together

Sincerely Yours,



Juan José Domínguez  
Category Manager



C.I.F. A-84105196 Registro Mercantil de Madrid, Tomo 20.497, Sección 8 , Folio 60, Hoja M-362720



To the kind attention of  
**SPINA GROUP S.R.L.**  
Via del Tecchione 36/B  
20098 – San Giuliano Milanese (MI)  
ITALY

8<sup>th</sup> July 2019

**Subject: D.R. Tosyali Plant (Algeria) – Supply of Chemical Laboratory**

Dear Sirs,

We sincerely appreciate and recognize the commendable services rendered by Spina Group for the successful completion of supply, start-up and commissioning of the Chemical Laboratory in the Midrex® Direct Reduction Plant, a project executed by Midrex Inc. and Paul Wurth Italia S.p.a. at Tosyali works in Oran, Algeria.

We appreciated your team for their proactive support in all activities carried out and we were satisfied with your performance, knowledge and support in finding the best solution for this project.

We feel confident in recommending your Company to whom who might concern and we look forward to continuing the ongoing cooperation between our companies.

Sincerely,

Giorgio GASTINELLI  
Senior Project Manager



PAUL WURTH Italia S.p.A.  
Via Dalmacier, 7  
10159 Genova  
ITALIA

Tel.: (+39) 010 640 91  
pw@paulwurth.com  
paulwurthitalia@pec.it  
www.paulwurth.com

Capitale sociale € 1.000.000,00 i.v.  
Partita IVA, Codice Fiscale e Registro delle Imprese di Genova: 0150940098  
R.E.A.: 418059  
Soggetta ad attività di direzione e coordinamento da parte di Paul Wurth SA



# Logistic and Delivery

Thanks to our in-depth knowledge of logistics and international regulations gained in 30 years of experience in the supply of industrial package worldwide, for our supplies we can arrange **any kind of INCONTERMS delivery**, including those with high volume and those of dangerous material necessary for the laboratory start-up that allows us to deliver our supplies in full compliance with laws of the country of destination.

**Oil & Gas North Field Expansion (NFE) project**





# MAJOR REFERENCES - 2024



## SCARABEO 5 FPU (FLOATING PRODUCTION UNIT)

**COUNTRY:** Republic of Congo

**CUSTOMER:** Saipem Italy

### WE SUPPLIED: HANDLING EQUIPMENT

Design, certification (by RINA) and supply of complete set of customized (i.e. ATEX and CX painting) davit cranes up to 5 tons, ATEX manual and electric devices like chain block, trolley hoists, portable cranes, powered pallet truck, stackers, trolleys self-propelled, containers, geared beam trolleys, etc.



## TINRHERT FIELD DEVELOPMENT PROJEC

**COUNTRY:** Algeria

**CUSTOMER:** Petrofac International UAE LLC

### WE SUPPLIED: CHEMICAL LABORATORY

Engineering and identification based on project analytical needs, procurement and installation of critical analyzers (e.g. AA, ICP, GC, TOC, Sulphur, IR, etc.) and necessary tools and equipment for samples weighting, treatment and preparation.



## H2 GREEN STEEL PROJECT

**COUNTRY:** Sweden

**CUSTOMER:** Paul Wurth

### WE SUPPLIED: SAMPLE PREP. & CHEMICAL LABORATORY

Technical Furniture, Grinders, Mills, Band Saw, Fume cupboards, Instruments, Spectrometers, X-Ray Analyzers, Sulphur Analyzers, precision balances, digital microscopes, glassware. Installation & commissioning at site



# MAJOR REFERENCES – 2024/2023



## NFE – NORTH FIELD EAST – NFE LNG PROJECT

**COUNTRY:** Qatar

**CUSTOMER:** CTEP France SNC - Represented by Technip Energies France and Chiyoda France

### WE SUPPLIED: SLUDGE / WASTE MANAGEMENT and HANDLING

Terminal Tractor and set of customized refuse skips for safe and for hazardous material

### WE SUPPLIED: SLUDGE / WASTE MANAGEMENT and HANDLING

2 x Tractors with front loader and front PTO, 12 x special trailers for sludge handling, sludge aerators, set of chemical unloading pumps, mixing systems, refuse skips, drum crushers, balers unit, oil filter compactors, sodium Hypochlorite Filling Station



## BERRI OILFIELD DEVELOPMENT

**COUNTRY:** Saudi Arabia

**CUSTOMER:** Saipem Saudi Arabia

### WE SUPPLIED: MECHANICAL WORKSHOP

300+ industrial machines including Valve test benches, Control Valve test rig, lathe machines, complete set of pneumatic tensioning tools, CNC centers, Motor test benches, Electrical Test Benches, sprayer machine, surface grinder, set of milling machines, cylindrical grinders, balancing machines, full set of electric and pneumatic portable tools, welding & repair machines, generators, compressors, electrical & pneumatic instruments



## CORAL - ENI

**COUNTRY:** Mozambique

**CUSTOMER:** Saipem Mozambique

### WE SUPPLIED: MECHANICAL WORKSHOP

Set of 100+ portable tools for safe area and set of portable monitor and analyzer for measurement and predictive maintenance, including a TELEDYNE FLIR thermography camera and set of portable vibration monitoring analyser, sensors and software by Bently Nevada

# MAJOR REFERENCES – 2023/2022



## **NFE – NORTH FIELD EAST – NFE LNG PROJECT**

**COUNTRY:** Qatar

**CUSTOMER:** CTEP France SNC - represented by Technip Energies France and Chiyoda France

### **WE SUPPLIED: MECHANICAL WORKSHOP**

150+ industrial machines including Valve test benches, Control Valve test rig, set of lathe machines, ATEX HVAC trailer mounted units up to 56Kw, complete set of pneumatic tensioning tools, HE Tube Bundle Puller and related bundle cleaner system, CNC screw and threading center, Motor test benches, Electrical Test Benches, sprayer machine, surface grinder, set of milling machines, cylindrical grinders, balancing machines



## **NAVAL ACADEMY BATRAN CONSTANTIA SEAPORT ELSA**

**COUNTRY:** Romania

**CUSTOMER:** Elsa Technology S.R.L.

### **WE SUPPLIED: LABORATORIES & PILOT PLANT**

Turn-key for maintenance, repair and refuelling of the vessels. Major items where the pilot plant composed by pressured ATEX panels, compressors, ATEX submerged fluid pumps, ATEX dosing pumps, ATEX axial fan, PLC with alarms, electrical test benches horns, lamps and portable testing instruments, benches, workstations and software



## **CORAL - ENI**

**COUNTRY:** Mozambique

**CUSTOMER:** Saipem Mozambique

### **WE SUPPLIED: MECHANICAL WORKSHOP**

Set of industrial machine and tools. Sheet forming machine, lathe machines, milling machine, pedestal grinders and column drills



# MAJOR REFERENCES – 2022/2021




## **TOSYALI DIRECT REDUCTION PLANT – SECOND UNIT**

**COUNTRY:** Algeria  
**CUSTOMER:** Paul Wurth

### **WE SUPPLIED: SAMPLE PREP. & CHEMICAL LABORATORY**

Technical Furniture, Grinders, Mills, Band Saw, Fume cupboards, Instruments, Spectrometers, X-Ray Analyzers, Sulphur Analyzers, precision balances, digital microscopes, glassware. Installation & commissioning at site




## **CTE PREZENZANO**

**COUNTRY:** Italy  
**CUSTOMER:** Ansaldo Energia

### **WE SUPPLIED: CHEMICAL LABORATORY**

Engineering, Technical Furniture, consumables and chemicals, utilities distribution system, instrumentation, Installation, commissioning

### **WE SUPPLIED: MAINTENANCE WORKSHOP**

Bench and portable testing instruments, machine tools, transformers machines, compressors, electrical & pneumatic repair instruments




## **CTE PREZENZANO**

**COUNTRY:** India  
**CUSTOMER:** HURL Consortium - Barauni Project

### **WE SUPPLIED: CHEMICAL LABORATORY**

Spare-parts, Start-up & commissioning of 24 critical analyzer (AA, ICP, GC, etc.) in coordination with OEM personnel



# MAJOR REFERENCES - 2021



## **BAPCO MODERNIZATION PROGRAMME**

**COUNTRY:** Bahrain

**CUSTOMER:** Technip Energies Italy

### **WE SUPPLIED: MECHANICAL WORKSHOP**

Valve test benches, Control Valve test rig, CNC screw and threading center, Motor test benches, Electrical Test Benches, sprayer machine, surface grinder, set of 12 lathe machines, set of 3 milling machines, cylindrical grinders, balancing machines, full set of electric and pneumatic portable machine tools, welding & repair machines, compressors, electrical & pneumatic instruments, shelving and storage system



## **AIN TSILA DEVELOPMENT PROJECT**

**COUNTRY:** Algeria

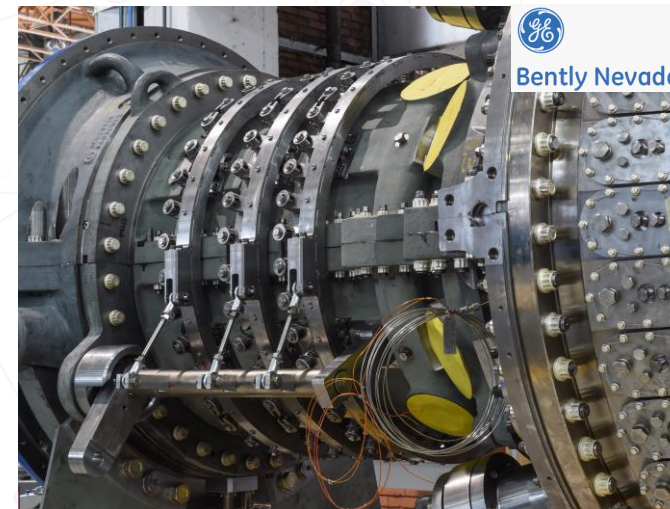
**CUSTOMER:** Petrofac International UAE LLC

### **WE SUPPLIED: MECHANICAL WORKSHOP**

Full set of ATEX chain block, ATEX trolleys, ATEX beam clamps, gas cylinder trolleys, ATEX bar trolleys, cranes and ATEX forklifts

### **WASTE MANAGEMENT PLANT**

Full set of industrial machines (Glass crusher, baler, waste compactors, tyre shredder, fluorescent tubes crusher, wood chippers, food waste extractors, dolly truck and forklift, drum washing facility)



## **GE BAKER HUGHES – TURBINE MAINTENANCE CONTAINER**

**CUSTOMER:** SPIE Oil & Gas Services

### **WE SUPPLIED: MECHANICAL WORKSHOP**

Full set of electric and pneumatic portable machine tools, measuring instruments, welding machines, compressors, electrical & pneumatic instruments, shelving and storage system.



# MAJOR REFERENCES - 2021



## **TAWEELAH POWER AND DESALINATION PLANT**

**COUNTRY:** UAE

**CUSTOMER:** Abengoa Agua Y Energia

### **WE SUPPLIED: CHEMICAL LABORATORY**

Engineering, Technical Furniture, fume hoods, instrumentation, chemicals and consumables



## **TALARA REFINERY MODERNIZATION**

**COUNTRY:** Perú

**CUSTOMER:** Cobra Peru S.A.

### **WE SUPPLIED: CHEMICAL LABORATORY**

Supply, installation and commissioning of 100+ analyzers and 30+ physical properties instruments and sampling accessories for refinery application



## **TERMOCANDELARIA POWER PLANT CARTAGENA**

**COUNTRY:** Colombia

**CUSTOMER:** Tecnicas Reunidas Spain

### **WE SUPPLIED: CHEMICAL LABORATORY**

Engineering, Technical Furniture, consumables and chemicals, utilities distribution system, instrumentation, Installation, commissioning



# MAJOR REFERENCES – 2020/2019



## AIN TSILA DEVELOPMENT PROJECT

**COUNTRY:** Algeria

**CUSTOMER:** Petrofac International UAE LLC

### WE SUPPLIED: CHEMICAL LABORATORY

Engineering, Technical Furniture, technical gases & utilities distribution system, instrumentation, Installation, commissioning



## ENI GHANA E&P

**COUNTRY:** Ghana

**CUSTOMER:** Spie Oil&Gas Services

### WE SUPPLIED: MECHANICAL WORKSHOP

Valve test benches, Electrical Test Benches, machine tools, welding & repair machines, compressors, electrical & pneumatic instruments, shelving and storage system



## HURL CONSORTIUM - BARAUNI PROJECT

**COUNTRY:** India

**CUSTOMER:** TechnipFMC

### WE SUPPLIED: CHEMICAL LABORATORY

No. 124 Analyzers (e.g. AA, ICP, GC, TOC, Sulphur, IR, etc.).  
Full set of Instruments and consumables

# MAJOR REFERENCES - 2019



## R&D CENTRE OF EXCELLENCE (COE)

**COUNTRY:** Congo

**CUSTOMER:** Eni Congo S.A.

### WE SUPPLIED: SOLAR LABORATORY

Photovoltaic Testers, data acquisition system, infrared cameras, signal amplifier, source-meter and all related accessories.

### BIOMASS LABORATORY

High pressure autoclave, bioreactors, evaporators and all related accessories



## DUQM PROJECT

**COUNTRY:** Oman

**CUSTOMER:** Saipem

### WE SUPPLIED: MECHANICAL WORKSHOP

Valve test benches, Electrical Test Benches, machine tools, welding & repair machines, compressors, electrical & pneumatic instruments



## ASORC CALCINATION DRYER PACKAGE AND H<sub>2</sub> PURIFICATION

**COUNTRY:** Egypt

**CUSTOMER:** AXENS / Heurtey Petrochem Solutions

### WE SUPPLIED: MANUAL SAMPLERS

SS 904L Samplers "self-standing" type with coolers, pressure reduction and flanged connections



# MAJOR REFERENCES – 2018/2017



## **SUMGAIT CHEMICAL INDUSTRIAL PARK (SCIP)**

**COUNTRY:** Azerbaijan  
**CUSTOMER:** Socar Polymer

### **WE SUPPLIED: ELECTRICAL MAINTENANCE WORKSHOP**

Complete Set of portable & bench equipment: calibrators, communicators, various electrical parameters testers and analyzers, thermal cameras, tools, multi-meters, consumables



## **CORAL SOUTH DEVELOPMENT PROJECT**

**COUNTRY:** Mozambique  
**CUSTOMER:** TJJV CONSORTIUM TECHNIPFMC/  
JGC Corporation

### **WE SUPPLIED: MECHANICAL WORKSHOP**

Valve test benches, Electrical Test Benches, machine tools, welding & repair machines, compressors, electrical & pneumatic instruments



## **AEGEAN REFINERY PROJECT**

**COUNTRY:** Turkey  
**CUSTOMER:** Aegean Refinery Project

### **WE SUPPLIED: CHEMICAL LABORATORY**

Technical Furniture, technical gases & electrical distribution system, instrumentation. Installation & commissioning at site



# MAJOR REFERENCES - 2017



 TOSYALI HOLDING

## TOSYALI DIRECT REDUCTION PLANT

**COUNTRY:** Algeria

**CUSTOMER:** Paul Wurth

### WE SUPPLIED: SAMPLE PREP. & CHEMICAL LABORATORY

Technical Furniture, Grinders, Mills, Band Saw, Fume cupboards, Instruments, Spectrometers, X-Ray Analyzers, Sulphur Analyzers, precision balances, digital microscopes, glassware. Installation & commissioning at site



 KNPC

## GAS TRAIN 5 MAA MINA AL-AHMADI REFINERY

**COUNTRY:** Kuwait

**CUSTOMER:** Tecnicas Reunidas

### WE SUPPLIED: CHEMICAL LABORATORY

Technical Furniture, Fume cupboards, Instruments, Total Sulphur Analyzers, Gas Chromatograph PFPD and SCD, Dew point meters, Natural gas analyzer, glassware and consumables



 ارامكو السعودية  
Saudi Aramco

## JAZAN INTEGRATED GASIFICATION COMBINED CYCLE

**COUNTRY:** Saudi Arabia

**CUSTOMER:** Saipem Italy

### WE SUPPLIED: MECHANICAL WORKSHOP

Turn-Key: Benches, machine tools, welding & repair machines, compressors, electrical & pneumatic instruments



# Spina In The World

**SPINA GROUP S.r.l**  
 Via del Tecchione 36/B 20098  
 ZI Sesto Ulteriano – San Giuliano  
 Mil.se (MI) Italy  
 Ph. (+39) 02.988626-1  
 Fax (+39) 0298281744  
[www.spinagroup.com](http://www.spinagroup.com)  
[customerservice@spinagroup.com](mailto:customerservice@spinagroup.com)

**SPINA GROUP MEXICO INDUSTRIAL SOLUTION S. de R.L. de C.V.**  
 Guanajuato No. 214, Piso. 1, Col. Roma Norte  
 C.P. 06700, C.D.M.X. Mexico  
 Ph. +52 55 5264 3678  
[mexico@spinagroup.com](mailto:mexico@spinagroup.com)

**SPINA GROUP AMERICA INC.**  
 1800 West Loop S. Ste 1600  
 Houston, TX 77027 USA  
 Ph. +1 832 834 3641  
[spina.usa@spinagroup.com](http://spina.usa@spinagroup.com)

**SPINA GROUP EGYPT Ltd.**  
 1/B/2 bldg., corer of Mohamed  
 Abd El Wahab St.  
 flat 1, Ground floor  
 Laselky Division, New Maadi  
[egypt@spinagroup.com](mailto:egypt@spinagroup.com)

**SPINA GUYANA INC**  
 Lot 105 smyth street  
 werk-en-rust, Georgetown  
[customerservice@spinagroup.com](mailto:customerservice@spinagroup.com)

**SPINA GROUP NETHERLANDS B.V.**  
 Hofplein, 20. 3rd Floor, 3032AC  
 Rotterdam - The Netherlands  
 Ph. +31 0 102378135  
[netherlands@spinagroup.com](mailto:netherlands@spinagroup.com)

**SPINA MOZAMBIQUE LDA**  
 Maputo, Avenida Vladimir Lenine,  
 1st Floor Millenium Park Building  
[mozambique@spinagroup.com](mailto:mozambique@spinagroup.com)

**SPINA AFRICA INDUSTRIAL SOLUTION Ltd.**  
 4th floor, Marble House 1,  
 Kingsway Road, Falomo Ikoyi, Lagos  
[nigeria@spinagroup.com](mailto:nigeria@spinagroup.com)

**SPINA GROUP MIDDLE EAST DMCC**  
 Unit No: 30 01 1077 DMCC J&G  
 Dubai United Arab Emirates  
 Ph. +971 566242118  
[uae@spinagroup.com](mailto:uae@spinagroup.com)



 HEADQUATER

 BRANCHES

 SALES AGENCY



**OUR COMPANY IS  
 ISO 9001:2015 CERTIFIED**



**Thank you**